

# 06 Tacoma

 TOYOTA | *moving forward* ▶



The 2006 Tacoma is ready for any road – or no road at all. With an available 236-horsepower V6, a 6-speed manual transmission and a nearly indestructible composite inner bed, the road isn't calling, it's groveling.

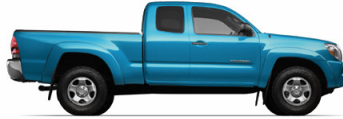
# '06 // TACOMA



4x4 Regular Cab  
5-Speed Manual (7503)  
MSRP\* Starting At: \$17,725.00



4x4 Access Cab  
5-Speed Manual (7513)  
MSRP\* Starting At: \$21,055.00



4x4 Access Cab V6  
6-Speed Manual (7553)  
MSRP\* Starting At: \$22,610.00



4x4 Access Cab V6  
5-Speed Auto (7554)  
MSRP\* Starting At: \$23,490.00



4x4 Double Cab V6  
6-Speed Manual (7593)  
MSRP\* Starting At: \$24,235.00



4x4 Double Cab V6  
5-Speed Auto (7594)  
MSRP\* Starting At: \$25,115.00



4x4 Double Cab V6 Longbed  
5-Speed Auto (7596)  
MSRP\* Starting At: \$25,615.00

## Exterior colors available for your Tacoma

Super White



Silver Streak  
Mica



Black Sand  
Pearl



Radiant Red



Impulse Red



Desert Sand  
Mica



Indigo Ink Pearl



Impulse Red  
Pearl



Speedway Blue



## Interior colors available for your Tacoma

Graphite Fabric



Taupe Fabric



### MSRP\*

\* 2006 Manufacturer's Suggested Retail Price (MSRP): Actual dealer price may vary. Pricing, specifications, standard features and available equipment are based on information available when this page was produced and are subject to change without notice. MSRP excludes Delivery, Processing and Handling Fee (DPH). Historically, vehicle manufacturers and distributors have charged a separate fee for processing, handling and delivering vehicles to dealerships. Toyota's charge for these services is called the "Delivery, Processing and Handling Fee" and is based on the value of the processing, handling and delivery services Toyota provides as well as Toyota's overall pricing structure. Toyota may make a profit on the Delivery, Processing and Handling Fee. Excludes taxes, license, title and available or regionally required equipment.

# '06 // TACOMA

## Standard Features 4x4

S = Standard O = Optional P = Part of Package

Regular Cab  
5-Speed  
Manual  
(Model 7503)

Access Cab  
5-Speed  
Manual  
(Model 7513)

Access Cab V6  
6-Speed Manual  
(Model 7553)

Access Cab V6  
5-Speed  
Auto  
(Model 7554)

Double Cab V6  
6-Speed  
Manual  
(Model 7593)

Double Cab V6  
5-Speed  
Auto  
(Model 7594)

Double Cab V6  
Longbed  
5-Speed  
Auto  
(Model 7596)

### MECHANICAL & PERFORMANCE

2.7-Liter 4-Cylinder DOHC 16-Valve Engine w/VVT-i	S	S	-	-	-	-	-
4.0-Liter V6 DOHC 24-Valve Engine w/VVT-i	-	-	S	S	S	S	S
5-Speed Manual Transmission	S	S	-	-	-	-	-
6-Speed Manual Transmission	-	-	S	-	S	-	-
5-Speed ECT-i Automatic Transmission	-	-	-	S	-	S	S
Coil Over Shock Double A-Arm Front Suspension	S	S	S	S	S	S	S
Multi-Leaf Rear Suspension w/Staggered Outboard Mounted Shocks	S	S	S	S	S	S	S
Front Stabilizer Bar	S	S	S	S	S	S	S
Power-Assisted Rack-and-Pinion Steering	S	S	S	S	S	S	S
Power-Assisted Front Disc/Rear Drum Brakes	S	S	S	S	S	S	S
4WDemand 4x4 System w/Electronically Controlled 2-Speed Transfer Case	S	S	S	S	S	S	S

### SAFETY

4 Wheel Anti-Lock Brakes w/Brake Assist and Electronic Brake-Force Distribution [1]	S	S	S	S	S	S	S
Driver & Front-Passenger Advanced Airbag System [2]	S	S	S	S	S	S	S
Passenger Airbag Cutoff Switch [3]	S	S	S	S	-	-	-
Driver & Front-Passenger 3-Point Seatbelts with Pretensioners & Force Limiters	S	S	S	S	S	S	S
Rear Outboard 3-Point Seatbelts	-	S	S	S	-	-	-
Rear 3-Point Seatbelts & Adjustable Headrests	-	-	-	-	S	S	S

# '06 // TACOMA

<b>Standard Features 4x4</b> S = Standard   O = Optional   P = Part of Package	Regular Cab 5-Speed Manual (Model 7503)	Access Cab 5-Speed Manual (Model 7513)	Access Cab V6 6-Speed Manual (Model 7553)	Access Cab V6 5-Speed Auto (Model 7554)	Double Cab V6 6-Speed Manual (Model 7593)	Double Cab V6 5-Speed Auto (Model 7594)	Double Cab V6 Longbed 5-Speed Auto (Model 7596)
Child Restraint System Anchors & Tether Anchor Brackets	S	S	S	S	S	S	S
Side-Impact Door Beams	S	S	S	S	S	S	S
Tire Pressure Monitor System [4]	S	S	S	S	S	S	S
Engine Immobilizer	-	-	S	S	S	S	S
<b>EXTERIOR</b>							
Black Grille, Front Bumper, Overfenders, Door Handles & Outside Mirrors	S	S	S	S	S	S	S
Argent Grille Surround & Rear Bumper	S	S	S	S	S	S	S
SMC Composite Inner Bed Inner w/Steel Outer Panels, Rail Caps & Removable Tailgate	S	S	S	S	S	S	
SMC Composite Long Bed Inner w/Steel Outer Panels, Rail Caps & Removable Tailgate	-	-	-	-	-	-	S
Deck Rail System w/4 Adj Tie-Down Cleats	S	S	S	S	S	S	S
16-in. Styled Steel Wheels w/P245/75R16 Tires	S	S	S	S	S	S	S
Dual Rear-Hinged Access Doors	-	S	S	S	-	-	-
<b>COMFORT &amp; CONVENIENCE</b>							
Cloth Tilt-Forward Bench Seat w/Adjustable Headrests	S	-	-	-	-	-	-
Cloth Bucket Front Seats w/Passenger-Side Fold-Flat	-	S	S	S	-	-	-
Cloth Bucket Front Seats w/Passenger-Side Fold-Flat, Driver-Side Lumbar Support, Adjustable Headrests & SR5 Fabric Trim	-	-	-	-	S	S	S
Tumble-Flat Rear Seats w/Underseat Storage & Adjustable Headrests	-	S	S	S	-	-	-
60/40 Split Rear Bench w/Underseat & Rear Bulkhead Storage	-	-	-	-	S	S	S
CFC-Free Air Conditioning	P	S	S	S	S	S	S

# '06 // TACOMA

<b>Standard Features 4x4</b> S = Standard   O = Optional   P = Part of Package	Regular Cab	Access Cab	Access Cab V6	Access Cab V6	Double Cab V6	Double Cab V6	Double Cab V6
	5-Speed Manual (Model 7503)	5-Speed Manual (Model 7513)	6-Speed Manual (Model 7553)	5-Speed Auto (Model 7554)	6-Speed Manual (Model 7593)	5-Speed Auto (Model 7594)	Longbed 5-Speed Auto (Model 7596)
Power Windows/Door Locks/Mirrors	-	P	P	P	S	S	S
AM/FM/CD Stereo w/4 Speakers	S	-	-	-	-	-	-
AM/FM/CD Stereo w/6 Speakers	-	S	S	S	S	S	S
Tilt/Telescoping Steering Wheel	S	S	S	S	S	S	S
Cigarette Lighter & Auxiliary Power Point	S	S	S	S	S	S	S
2 Front Console Cup Holders	S	-	-	-	-	-	-
3 Center/2 Rear Console Cup Holders	-	S	S	-	S	-	S
2 Front/1 Center/2 Rear Console Cup Holders	-	-	-	S	-	S	-
LED-Illuminated Gauges	S	S	S	S	S	S	S
Two Speed Windshield Wipers	S	S	S	S	S	S	S
Engine & Transfer Case Skidplates	S	P	P	P	P	P	P

# '06 // TACOMA

The following option combinations are available in your area

## 4x4 Regular Cab 5-Speed Manual (7503)

### Option Combo A \$1,145.00

Standard Package #1: Air Conditioner, Sliding Rear Window (BZ)

### Option Combo B \$1,860.00

SR5 Package #1: Air Conditioner, Sliding Rear Window, Bucket Seats w/SR5 Fabric Trim & Center Console, Chrome Grille Surround & Rear Bumper, Color-Keyed Front Bumper & Overfenders, Metallic Tone Instrument Panel Trim, Leather Steering Wheel & Shifter, Variable Speed Wipers, SR5 Badging (SE)

## 4x4 Access Cab 5-Speed Manual (7513)

### Option Combo A \$285.00

Sliding Rear Window (WR)

### Option Combo B \$1,460.00

Convenience Package: Sliding Rear Window w/Privacy Glass, Power Windows/Door Locks/Outside Mirrors, Remote Keyless Entry, Cruise Control (CP)

### Option Combo C \$2,125.00

SR5 Package #2: Sliding Rear Window w/Privacy Glass, Power Windows/Door Locks/Outside Mirrors, Remote Keyless Entry, Cruise Control, Bucket Seats w/Driver Lumbar & SR5 Fabric Trim, Chrome Grille Surround & Rear Bumper, Color-Keyed Front Bumper & Overfenders, Metallic Tone Instrument Panel Trim, Leather Steering Wheel & Shifter, Variable Speed Wipers, SR5 Badging (SL)

### Option Combo D \$2,525.00

Aluminum Wheels (AL)  
SR5 Package #2 (SL)

### Option Combo E \$2,725.00

Aluminum Wheels (AL)  
Deluxe ETR Audio w/6 CD In-Dash Changer & 6 Speakers (DZ)  
SR5 Package #2 (SL)

## 4x4 Access Cab V6 6-Speed Manual (7553)

### Option Combo A \$285.00

Sliding Rear Window (WR)

### Option Combo B \$1,460.00

Convenience Package (CP)

### Option Combo C \$2,235.00

SR5 Package #2 (SL)

### Option Combo D \$2,625.00

Limited Slip Differential (LD)  
SR5 Package #2 (SL)

### Option Combo E \$2,885.00

SR5 Package #2 (SL)  
Towing Package (TO)

### Option Combo F \$3,275.00

Limited Slip Differential (LD)  
SR5 Package #2 (SL)  
Towing Package (TO)

# '06 // TACOMA

## **Option Combo G \$3,285.00**

Aluminum Wheels (AL)  
SR5 Package #2 (SL)  
Towing Package (TO)

## **Option Combo I \$3,955.00**

Deluxe ETR Audio w/6 CD In-Dash Changer & 6 Speakers (DZ)  
TRD Off-Road Package #1: Sliding Rear Window w/Privacy Glass, Power Windows/Door Locks/Outside Mirrors, Remote Keyless Entry, Cruise Control, Chrome Grille Surround & Rear Bumper, Color-Keyed Front Bumper & Overfenders, Metallic Tone Instrument Panel Trim, Leather Steering Wheel & Shifter, Variable Speed Wipers, SR5 Badging, Fog Lamps, Off-Road Tuned Suspension w/Bilstein Shocks, 16" Alloy Wheels w/P265/70R16 BFGoodrich Tires, Locking Rear Differential, Engine Skid Plate, Front Tow Hook, TRD Off-Road Graphics, Sport Seats w/Driver Lumbar & Sport Fabric Trim, 115V/400W Deck-Mounted Power Outlet, Multifunction Overhead Console w/Compass & Temp Gauge (OC)

## **Option Combo K \$4,405.00**

TRD Off-Road Package #1 (OC)  
Towing Package (TO)

## **Option Combo M \$4,605.00**

Deluxe ETR Audio w/6 CD In-Dash Changer & 6 Speakers (DZ)  
TRD Off-Road Package #1 (OC)  
Towing Package (TO)

## **Option Combo H \$3,675.00**

Aluminum Wheels (AL)  
Limited Slip Differential (LD)  
SR5 Package #2 (SL)  
Towing Package (TO)

## **Option Combo J \$4,115.00**

Deluxe ETR Audio w/6 CD In-Dash Changer & 6 Speakers (DZ)  
TRD Sport Package #1: Sliding Rear Window w/Privacy Glass, Power Windows/Door Locks/Outside Mirrors, Remote Keyless Entry, Cruise Control, Color-Keyed Front Bumper & Overfenders, Metallic Tone Instrument Panel Trim, Leather Steering Wheel & Shifter, Variable Speed Wipers, SR5 Badging, Fog Lamps, Limited-Slip Differential, Sport Suspension w/Bilstein Shocks, 17" Alloy Wheels w/P265/65R17 Tires, 115V/400W Deck-Mounted Power Outlet, Multifunction Overhead Console w/Compass & Temp Gauge, Color-Keyed Grille Surround/Bumpers/Mirrors/Door Handles/Overfenders, Sport Seats w/Driver Lumbar & Sport Fabric Trim, TRD Sport Graphics (PY)

## **Option Combo L \$4,565.00**

TRD Sport Package #1 (PY)  
Towing Package (TO)

## **Option Combo N \$4,765.00**

Deluxe ETR Audio w/6 CD In-Dash Changer & 6 Speakers (DZ)  
TRD Sport Package #1 (PY)  
Towing Package (TO)

## **4x4 Access Cab V6 5-Speed Auto (7554)**

## **Option Combo A \$285.00**

Sliding Rear Window (WR)

## **Option Combo C \$1,850.00**

Convenience Package (CP)  
Limited Slip Differential (LD)

## **Option Combo E \$2,625.00**

Limited Slip Differential (LD)

## **Option Combo B \$1,460.00**

Convenience Package (CP)

## **Option Combo D \$2,235.00**

SR5 Package #2 (SL)

## **Option Combo F \$3,275.00**

Limited Slip Differential (LD)

## '06 // TACOMA

SR5 Package #2 (SL)

**Option Combo G \$3,285.00**

Aluminum Wheels (AL)  
SR5 Package #2 (SL)  
Towing Package (TO)

**Option Combo I \$4,405.00**

TRD Off-Road Package #1 (OC)  
Towing Package (TO)

**Option Combo K \$4,605.00**

Deluxe ETR Audio w/6 CD In-Dash Changer & 6  
Speakers (DZ)  
TRD Off-Road Package #1 (OC)  
Towing Package (TO)

SR5 Package #2 (SL)  
Towing Package (TO)

**Option Combo H \$3,675.00**

Aluminum Wheels (AL)  
Limited Slip Differential (LD)  
SR5 Package #2 (SL)  
Towing Package (TO)

**Option Combo J \$4,565.00**

TRD Sport Package #1 (PY)  
Towing Package (TO)

**Option Combo L \$4,765.00**

Deluxe ETR Audio w/6 CD In-Dash Changer & 6  
Speakers (DZ)  
TRD Sport Package #1 (PY)  
Towing Package (TO)

### 4x4 Double Cab V6 6-Speed Manual (7593)

**Option Combo A \$1,525.00**

SR5 Package #2 (SL)

**Option Combo C \$1,925.00**

Aluminum Wheels (AL)  
SR5 Package #2 (SL)

**Option Combo E \$2,965.00**

Aluminum Wheels (AL)  
Limited Slip Differential (LD)  
SR5 Package #2 (SL)  
Towing Package (TO)

**Option Combo G \$3,165.00**

Aluminum Wheels (AL)  
Deluxe ETR Audio w/6 CD In-Dash Changer & 6  
Speakers (DZ)  
Limited Slip Differential (LD)  
SR5 Package #2 (SL)  
Towing Package (TO)

**Option Combo I \$3,695.00**

TRD Off-Road Package #1 (OC)

**Option Combo B \$1,915.00**

Limited Slip Differential (LD)  
SR5 Package #2 (SL)

**Option Combo D \$2,575.00**

Aluminum Wheels (AL)  
SR5 Package #2 (SL)  
Towing Package (TO)

**Option Combo F \$3,045.00**

TRD Off-Road Package #1 (OC)

**Option Combo H \$3,220.00**

TRD Sport Package #1 (PY)

**Option Combo J \$3,780.00**

JBL AM/FM/6 CD In-Dash Changer w/7 Speakers

# '06 // TACOMA

Towing Package (TO)

(EJ)  
TRD Sport Package #1 (PY)

**Option Combo K \$3,870.00**

TRD Sport Package #1 (PY)  
Towing Package (TO)

**Option Combo L \$3,895.00**

Deluxe ETR Audio w/6 CD In-Dash Changer & 6 Speakers (DZ)  
TRD Off-Road Package #1 (OC)  
Towing Package (TO)

**Option Combo M \$4,070.00**

Deluxe ETR Audio w/6 CD In-Dash Changer & 6 Speakers (DZ)  
TRD Sport Package #1 (PY)  
Towing Package (TO)

**Option Combo N \$4,215.00**

Aluminum Wheels (AL)  
JBL AM/FM/6 CD In-Dash Changer w/7 Speakers (EJ)  
Driver & Pass Side and Curtain Side Airbags (GY)  
Limited Slip Differential (LD)  
Daytime Running Lights (RL)  
SR5 Package #2 (SL)  
Towing Package (TO)

**Option Combo O \$4,295.00**

JBL AM/FM/6 CD In-Dash Changer w/7 Speakers (EJ)  
Driver & Pass Side and Curtain Side Airbags (GY)  
TRD Off-Road Package #1 (OC)  
Daytime Running Lights (RL)

**Option Combo P \$4,430.00**

JBL AM/FM/6 CD In-Dash Changer w/7 Speakers (EJ)  
TRD Sport Package #1 (PY)  
Towing Package (TO)

**Option Combo Q \$4,945.00**

JBL AM/FM/6 CD In-Dash Changer w/7 Speakers (EJ)  
Driver & Pass Side and Curtain Side Airbags (GY)  
TRD Off-Road Package #1 (OC)  
Daytime Running Lights (RL)  
Towing Package (TO)

**Option Combo R \$5,120.00**

JBL AM/FM/6 CD In-Dash Changer w/7 Speakers (EJ)  
Driver & Pass Side and Curtain Side Airbags (GY)  
TRD Sport Package #1 (PY)  
Daytime Running Lights (RL)  
Towing Package (TO)

**Option Combo S \$5,385.00**

Deluxe ETR Audio w/6 CD In-Dash Changer & 6 Speakers (DZ)  
Driver & Pass Side and Curtain Side Airbags (GY)  
TRD Off-Road Package #1 (OC)  
Daytime Running Lights (RL)  
Towing Package (TO)  
Vehicle Stability Control (VF)

**4x4 Double Cab V6 5-Speed Auto (7594)**

**Option Combo A \$1,525.00**

SR5 Package #2 (SL)

**Option Combo B \$1,915.00**

Limited Slip Differential (LD)  
SR5 Package #2 (SL)

# '06 // TACOMA

## **Option Combo C \$1,925.00**

Aluminum Wheels (AL)  
SR5 Package #2 (SL)

## **Option Combo E \$2,215.00**

Driver & Pass Side and Curtain Side Airbags (GY)  
Daytime Running Lights (RL)  
SR5 Package #2 (SL)

## **Option Combo G \$2,965.00**

Aluminum Wheels (AL)  
Limited Slip Differential (LD)  
SR5 Package #2 (SL)  
Towing Package (TO)

## **Option Combo I \$3,165.00**

Aluminum Wheels (AL)  
Deluxe ETR Audio w/6 CD In-Dash Changer & 6  
Speakers (DZ)  
Limited Slip Differential (LD)  
SR5 Package #2 (SL)  
Towing Package (TO)

## **Option Combo K \$3,605.00**

JBL AM/FM/6 CD In-Dash Changer w/7 Speakers  
(EJ)  
TRD Off-Road Package #1 (OC)

## **Option Combo M \$3,870.00**

TRD Sport Package #1 (PY)  
Towing Package (TO)

## **Option Combo O \$4,070.00**

Deluxe ETR Audio w/6 CD In-Dash Changer & 6  
Speakers (DZ)  
TRD Sport Package #1 (PY)  
Towing Package (TO)

## **Option Combo Q \$4,215.00**

Aluminum Wheels (AL)  
JBL AM/FM/6 CD In-Dash Changer w/7 Speakers  
(EJ)

## **Option Combo D \$2,175.00**

SR5 Package #2 (SL)  
Towing Package (TO)

## **Option Combo F \$2,575.00**

Aluminum Wheels (AL)  
SR5 Package #2 (SL)  
Towing Package (TO)

## **Option Combo H \$3,045.00**

TRD Off-Road Package #1 (OC)

## **Option Combo J \$3,220.00**

TRD Sport Package #1 (PY)

## **Option Combo L \$3,695.00**

TRD Off-Road Package #1 (OC)  
Towing Package (TO)

## **Option Combo N \$3,895.00**

Deluxe ETR Audio w/6 CD In-Dash Changer & 6  
Speakers (DZ)  
TRD Off-Road Package #1 (OC)  
Towing Package (TO)

## **Option Combo P \$4,110.00**

Deluxe ETR Audio w/6 CD In-Dash Changer & 6  
Speakers (DZ)  
Driver & Pass Side and Curtain Side Airbags (GY)  
TRD Sport Package #1 (PY)  
Daytime Running Lights (RL)

## **Option Combo R \$4,255.00**

JBL AM/FM/6 CD In-Dash Changer w/7 Speakers  
(EJ)  
TRD Off-Road Package #1 (OC)

## '06 // TACOMA

Driver & Pass Side and Curtain Side Airbags (GY)  
Limited Slip Differential (LD)  
Daytime Running Lights (RL)  
SR5 Package #2 (SL)  
Towing Package (TO)

### Option Combo S \$4,430.00

JBL AM/FM/6 CD In-Dash Changer w/7 Speakers (EJ)  
TRD Sport Package #1 (PY)  
Towing Package (TO)

### Option Combo U \$4,945.00

JBL AM/FM/6 CD In-Dash Changer w/7 Speakers (EJ)  
Driver & Pass Side and Curtain Side Airbags (GY)  
TRD Off-Road Package #1 (OC)  
Daytime Running Lights (RL)  
Towing Package (TO)

### Option Combo W \$5,145.00

JBL AM/FM/6 CD In-Dash Changer w/7 Speakers (EJ)  
Driver & Pass Side and Curtain Side Airbags (GY)  
TRD Off-Road Package #1 (OC)  
Daytime Running Lights (RL)  
Vehicle Stability Control + Traction Control w/Hill Start Assist Control & Downhill Assist Control (VE)

### Option Combo Y \$5,795.00

JBL AM/FM/6 CD In-Dash Changer w/7 Speakers (EJ)  
Driver & Pass Side and Curtain Side Airbags (GY)  
TRD Off-Road Package #1 (OC)  
Daytime Running Lights (RL)  
Towing Package (TO)  
Vehicle Stability Control + Traction Control w/Hill Start Assist Control & Downhill Assist Control (VE)

Towing Package (TO)

### Option Combo T \$4,585.00

Deluxe ETR Audio w/6 CD In-Dash Changer & 6 Speakers (DZ)  
Driver & Pass Side and Curtain Side Airbags (GY)  
TRD Off-Road Package #1 (OC)  
Daytime Running Lights (RL)  
Towing Package (TO)

### Option Combo V \$5,120.00

JBL AM/FM/6 CD In-Dash Changer w/7 Speakers (EJ)  
Driver & Pass Side and Curtain Side Airbags (GY)  
TRD Sport Package #1 (PY)  
Daytime Running Lights (RL)  
Towing Package (TO)

### Option Combo X \$5,435.00

Deluxe ETR Audio w/6 CD In-Dash Changer & 6 Speakers (DZ)  
Driver & Pass Side and Curtain Side Airbags (GY)  
TRD Off-Road Package #1 (OC)  
Daytime Running Lights (RL)  
Towing Package (TO)  
Vehicle Stability Control + Traction Control w/Hill Start Assist Control & Downhill Assist Control (VE)

## 4x4 Double Cab V6 Longbed 5-Speed Auto (7596)

### Option Combo A \$690.00

Driver & Pass Side and Curtain Side Airbags (GY)  
Daytime Running Lights (RL)

### Option Combo C \$1,915.00

### Option Combo B \$1,525.00

SR5 Package #2 (SL)

### Option Combo D \$2,175.00

# '06 // TACOMA

Limited Slip Differential (LD)  
SR5 Package #2 (SL)

## **Option Combo E \$2,375.00**

Deluxe ETR Audio w/6 CD In-Dash Changer & 6 Speakers (DZ)  
SR5 Package #2 (SL)  
Towing Package (TO)

## **Option Combo G \$2,565.00**

Limited Slip Differential (LD)  
SR5 Package #2 (SL)  
Towing Package (TO)

## **Option Combo I \$2,765.00**

Deluxe ETR Audio w/6 CD In-Dash Changer & 6 Speakers (DZ)  
Limited Slip Differential (LD)  
SR5 Package #2 (SL)  
Towing Package (TO)

## **Option Combo K \$2,965.00**

Aluminum Wheels (AL)  
Limited Slip Differential (LD)  
SR5 Package #2 (SL)  
Towing Package (TO)

## **Option Combo M \$3,255.00**

Driver & Pass Side and Curtain Side Airbags (GY)  
Limited Slip Differential (LD)  
Daytime Running Lights (RL)  
SR5 Package #2 (SL)  
Towing Package (TO)

## **Option Combo O \$3,995.00**

TRD Sport Package #3 (PM)  
Towing Package (TO)

SR5 Package #2 (SL)  
Towing Package (TO)

## **Option Combo F \$2,485.00**

Aluminum Wheels (AL)  
JBL AM/FM/6 CD In-Dash Changer w/7 Speakers (EJ)  
SR5 Package #2 (SL)

## **Option Combo H \$2,575.00**

Aluminum Wheels (AL)  
SR5 Package #2 (SL)  
Towing Package (TO)

## **Option Combo J \$2,865.00**

Driver & Pass Side and Curtain Side Airbags (GY)  
Daytime Running Lights (RL)  
SR5 Package #2 (SL)  
Towing Package (TO)

## **Option Combo L \$3,165.00**

Aluminum Wheels (AL)  
Deluxe ETR Audio w/6 CD In-Dash Changer & 6 Speakers (DZ)  
Limited Slip Differential (LD)  
SR5 Package #2 (SL)  
Towing Package (TO)

## **Option Combo N \$3,345.00**

TRD Sport Package #3: Sliding Rear Window w/Privacy Glass, Remote Keyless Entry, Cruise Control, Color-Keyed Front Bumper & Overfenders, Metallic Tone Instrument Panel Trim, Leather Steering Wheel & Shifter, Variable Speed Wipers, SR5 Badging, Fog Lamps, Limited-Slip Differential, Sport Suspension w/Bilstein Shocks, 17" Alloy Wheels w/P265/65R17 Tires, 115V/400W Deck-Mounted Power Outlet, Multifunction Overhead Console w/Compass & Temp Gauge, Color-Keyed Grille Surround/Bumpers/Mirrors/Door Handles/Overfenders, Sport Seats w/Driver Lumbar & Sport Fabric Trim, TRD Sport Graphics, Auto-Dimming Inside Mirror (PM)

## **Option Combo P \$4,195.00**

Deluxe ETR Audio w/6 CD In-Dash Changer & 6 Speakers (DZ)  
TRD Sport Package #3 (PM)

## '06 // TACOMA

Towing Package (TO)

### **Option Combo Q \$4,215.00**

Aluminum Wheels (AL)  
JBL AM/FM/6 CD In-Dash Changer w/7 Speakers (EJ)  
Driver & Pass Side and Curtain Side Airbags (GY)  
Limited Slip Differential (LD)  
Daytime Running Lights (RL)  
SR5 Package #2 (SL)  
Towing Package (TO)

### **Option Combo S \$4,555.00**

JBL AM/FM/6 CD In-Dash Changer w/7 Speakers (EJ)  
TRD Sport Package #3 (PM)  
Towing Package (TO)

### **Option Combo U \$4,885.00**

Deluxe ETR Audio w/6 CD In-Dash Changer & 6 Speakers (DZ)  
Driver & Pass Side and Curtain Side Airbags (GY)  
TRD Sport Package #3 (PM)  
Daytime Running Lights (RL)  
Towing Package (TO)

### **Option Combo R \$4,415.00**

Aluminum Wheels (AL)  
Deluxe ETR Audio w/6 CD In-Dash Changer & 6 Speakers (DZ)  
Driver & Pass Side and Curtain Side Airbags (GY)  
Daytime Running Lights (RL)  
SR5 Package #2 (SL)  
Towing Package (TO)  
Vehicle Stability Control (VD)

### **Option Combo T \$4,685.00**

Driver & Pass Side and Curtain Side Airbags (GY)  
TRD Sport Package #3 (PM)  
Daytime Running Lights (RL)  
Towing Package (TO)

### **Option Combo V \$5,245.00**

JBL AM/FM/6 CD In-Dash Changer w/7 Speakers (EJ)  
Driver & Pass Side and Curtain Side Airbags (GY)  
TRD Sport Package #3 (PM)  
Daytime Running Lights (RL)  
Towing Package (TO)

# '06 // TACOMA

Specifications 4x4	Regular Cab 5-Speed Manual (Model 7503)	Access Cab 5-Speed Manual (Model 7513)	Access Cab V6 6-Speed Manual (Model 7553)	Access Cab V6 5-Speed Auto (Model 7554)	Double Cab V6 6-Speed Manual (Model 7593)	Double Cab V6 5-Speed Auto (Model 7594)	Double Cab V6 Longbed 5-Speed Auto (Model 7596)
<b>Mechanical/Performance</b>							
2.7-liter DOHC EFI 4-cylinder with VVT-I 159 hp @ 5200 rpm 180 lb.-ft @ 3800 rpm	S						NA
4.0-liter DOHC EFI V6 with VVT-I 236 hp @ 5200 rpm 266 lb. -ft @ 4000 rpm	NA						S
4WDemand: part-time 4-wheel-drive system with 2-speed electronically controlled transfer case			S				
<b>Transmission</b>							
5-speed manual transmission	S						NA
6-speed manual transmission	NA		S	NA	S	NA	
Clutch start-cancel switch	S		NA		S	NA	
5-speed electronically controlled automatic overdrive transmission with intelligence (ECT-i)	NA		S	NA		S	
Final axle ratio	4.10						3.73
<b>Body/Suspension/Chassis</b>							
Body construction	One-piece frame rails with seven cross members and fully boxed front sub-frame						
Front suspension	Coil-spring double wishbone suspension						
Rear suspension	Leaf spring suspension with staggered outboard-mounted gas shock absorbers						
Front stabilizer bar (dia, in.)	1.18						

# '06 // TACOMA

Specifications 4x4	Regular Cab 5-Speed Manual (Model 7503)	Access Cab 5-Speed Manual (Model 7513)	Access Cab V6 6-Speed Manual (Model 7553)	Access Cab V6 5-Speed Auto (Model 7554)	Double Cab V6 6-Speed Manual (Model 7593)	Double Cab V6 5-Speed Auto (Model 7594)	Double Cab V6 Longbed 5-Speed Auto (Model 7596)	
Steering	Variable-assist power rack-and-pinion steering							
Steering wheel turns, lock-to-lock	3.64							
Power-assisted ventilated front disc brakes (dia, in.)	12.56							
Rear brakes	Rear 10-in. drum brakes with tandem booster							
4-wheel Anti-lock Brake System (ABS) with Electronic Brake-force Distribution (EBD) and Brake Assist [1]	S							
<b>Exterior Measurements</b>								
Overall length (in.)	190.4	208.1				221.3		
Overall height (in.)	69.9				70.1			
Overall width (in.)	74.6							
Bed length (in.)	73.5				60.3	73.5		
Bed height (in.)	18.0							
Bed width (in., total/between wheelwells)	56.7/41.5							
Wheelbase (in.)	110.0	127.8				140.9		
Track (in., front/rear)	63.0/63.4							
Turning circle diameter, curb-to-curb (ft.)	36.1	40.7						
<b>Interior Measurements</b>								
Head room (in., front/rear)	40.0/NA	39.9/35.2				40.1/38.5		
Leg room (in., front/rear)	41.7/NA	41.7/28.2				41.7/32.6		
Shoulder room (in., front/rear)	58.1/NA	57.7/57.7				57.7/59.3		
Hip room (in., front/rear)	53.6/NA	53.6/53.6				53.6/55.2		
Interior passenger volume (cu. ft., front/rear)	56.1/NA	55.6/33.1				55.8/43.1		
Maximum seating capacity	3	4				5		

# '06 // TACOMA

<b>Specifications 4x4</b>	<b>Regular Cab 5-Speed Manual (Model 7503)</b>	<b>Access Cab 5-Speed Manual (Model 7513)</b>	<b>Access Cab V6 6-Speed Manual (Model 7553)</b>	<b>Access Cab V6 5-Speed Auto (Model 7554)</b>	<b>Double Cab V6 6-Speed Manual (Model 7593)</b>	<b>Double Cab V6 5-Speed Auto (Model 7594)</b>	<b>Double Cab V6 Longbed 5-Speed Auto (Model 7596)</b>	
<b>Off-Highway</b>								
Approach/departure angle (degrees)	35/26						35/25	
Ramp breakover angle (degrees)	27	21				20		
Minimum running ground clearance	9.4							
4x4 transfer case ratio (high/low, 4x4 models)	1.00/2.57							
<b>Weights and Payload/Towing Capacities</b>								
Curb weight (lb.)	3595	3875	3955	3980	4055	4080	4135	
Gross Vehicle Weight Rating (GVWR) (lb.)	5100	5350		5350	5450			
Payload [6]	1505	1475	1395	1370		1315	1370	
Tongue load (lb., standard/maximum)	350	650[4]						
Standard towing capacity (lb.) [7]	3500							
Maximum towing capacity (lb.) [7] [8]	3500	6500						
Gross Combined Weight Rating (GCWR) (lb.) (with Towing Package)	8000	8100 (11,100)						

# '06 // TACOMA

Specifications 4x4	Regular Cab 5-Speed Manual (Model 7503)	Access Cab 5-Speed Manual (Model 7513)	Access Cab V6 6-Speed Manual (Model 7553)	Access Cab V6 5-Speed Auto (Model 7554)	Double Cab V6 6-Speed Manual (Model 7593)	Double Cab V6 5-Speed Auto (Model 7594)	Double Cab V6 Longbed 5-Speed Auto (Model 7596)
<b>Tires</b>							
Wheels	16-in. styled steel						
Standard tire size	P245/75R16						
Tire type	Mud-and-Snow						
<b>EPA Mileage Estimates [9]</b>							
MPG city/highway [9]	19/23		16/20	17/21	16/20		17/21
Fuel tank (gal.)	21.0						

# '06 // TACOMA

## ACCESSORIES - EXTERIOR



**7-Pin to 4-Pin Adaptor**

\$13.00

\*Installed MSRP



**Alloy Wheels**

\$695.00

\*Installed MSRP



**Bed Extender**

\$282.00

\*Installed MSRP



**Bed Mat**

\$119.00

\*Installed MSRP



**Bed Net**

\$115.00

\*Installed MSRP



**Bed Rug**

\$399.00

\*Installed MSRP



**Bike Rack Attachment**  
note: requires adapter kit

\$169.00

\*\*Parts Only MSRP



**Cargo Cross Bars**

\$129.00

\*Installed MSRP



**Cargo Divider**

\$295.00

\*Installed MSRP



**Cleat Tie Down**

\$25.00

\*\*Parts Only MSRP



**Exhaust Tip by Valor**

\$64.00

\*Installed MSRP



**Fork Mount Bike Attachment**

\$49.00

\*Installed MSRP

\* Installed MSRP is the Manufacturer's Suggest Retail Price for accessories installed by the manufacturer. Actual prices for dealer installed accessories may vary. Please see your local Toyota dealer for pricing.

\*\* Installation not included. See your local dealer for installed pricing.

# '06 // TACOMA

## ACCESSORIES - EXTERIOR



### Front Skid Plate

\$199.00

\*Installed MSRP



### Hood Protector

\$119.00

\*Installed MSRP



### Premium License Plate Frames

Gold - \$49.00

Chrome - \$36.95

Black - \$42.95

\*\*Parts Only MSRP



### Mini Tie Down

\$40.00

\*Installed MSRP



### Roof Rack

\$339.00

\*Installed MSRP



### Roof Rack Attachment Adapters

\$50.00

\*\*Parts Only MSRP



### Running Boards

Xtra Cab - \$369.00

Double Cab - \$399.00

\*Installed MSRP



### Ski/Snowboard Attachment note: requires adapter kit

\$127.00

\*\*Parts Only MSRP



### Spare Tire Lock

\$64.00

\*Installed MSRP



### Storage Boxes

Side Box (single) - \$275.00\*\*

Side Box (pair) - \$599.00\*

\*Installed MSRP

\*\*Parts Only MSRP



### Storage Boxes

Large - \$599.00

\*Installed MSRP



### Super Sport Shell by SnugTop\*\*\*

Double Cab - \$1699.00

Xtra Cab +

Double Cab Long Bed - \$1799.00

\*Installed MSRP

\* Installed MSRP is the Manufacturer's Suggest Retail Price for accessories installed by the manufacturer.

Actual prices for dealer installed accessories may vary. Please see your local Toyota dealer for pricing.

\*\* Installation not included. See your local dealer for installed pricing.

\*\*\* Must be ordered with the vehicle at the time of allocation.

# '06 // TACOMA

## ACCESSORIES - EXTERIOR



### Towing Accessories

\$440.00

\*Installed MSRP



### Truck Bed D-Rings

\$53.00

\*Installed MSRP



### TRD Performance Exhaust

D-Cab Long Bed - \$535.00

C-Cab Short Bed - \$520.00

D-Cab Short Bed - \$520.00

\*Installed MSRP



### Tube Steps by Dee Zee

Reg. Cab - \$379.00

Xtra Cab Short Bed - \$439.00

D-Cab Short Bed - \$439.00

D-Cab Long Bed - \$449.00

\*Installed MSRP



### Wheel Locks

\$59.00

\*Installed MSRP

\* Installed MSRP is the Manufacturer's Suggest Retail Price for accessories installed by the manufacturer.

Actual prices for dealer installed accessories may vary. Please see your local Toyota dealer for pricing.

\*\* Installation not included. See your local dealer for installed pricing.

# '06 // TACOMA

## ACCESSORIES - INTERIOR



**All Weather Mats**  
 Gray 2 pc - \$55.00  
 Gray 4 pc C-Cab - \$99.00  
 Gray 4 pc D-Cab - \$99.00

\*\*Parts Only MSRP



**Ashtray/Retainer**  
 \$21.00

\*\*Parts Only MSRP



**Auto Dimming Mirror**  
 \$269.00

\*Installed MSRP



**Cargo Net**  
 \$49.00

\*Installed MSRP



**Carpet Floor Mats**  
 (includes Door Sill Protectors)  
 Regular Cab - \$110.00  
 Xtra Cab - \$170.00  
 D-Cab - \$188.00

\*Installed MSRP



**Door Sill Protector**  
 Regular + Xtra Cab - \$27.00  
 Double Cab - \$30.00

\*\*Parts Only MSRP



**Emergency Assistance Kit**  
 \$70.00

\*Installed MSRP



**First Aid Kit**  
 \$29.00

\*Installed MSRP



**Seat Covers**  
 \$225.00

\*Installed MSRP



**Shifter Knobs by OBX Racing**  
 \$49.00

\*Installed MSRP



**Sport Pedals by OBX Racing**  
 \$79.00

\*Installed MSRP



**VIP (Vehicle Intrusion Protection)**  
 \$479.00

\*Installed MSRP

\* Installed MSRP is the Manufacturer's Suggest Retail Price for accessories installed by the manufacturer.

Actual prices for dealer installed accessories may vary. Please see your local Toyota dealer for pricing.

\*\* Installation not included. See your local dealer for installed pricing.

# '06 // TACOMA

## Warranties

**Basic:** 36 months/36,000 miles (all components other than normal wear and maintenance items).

**Powertrain:** 60 months/60,000 miles (engine, transmission/transaxle, front-wheel drive, rear-wheel drive, seatbelts and airbags).

**Rust-Through:** 60 months/unlimited miles (corrosion perforation of sheet metal).

**Federal Emission Coverage:** Components under the federal emission defect warranty are covered for 36 months/36,000 miles and specified major emission control components are covered for 8 years/80,000 miles. Specified major emission control components under emission performance warranty are also covered for 8 years/80,000 miles. In addition, emission performance warranty is applicable for 24 months/24,000 miles in states and local jurisdictions that require a periodic EPA-approved inspection and maintenance program.

**California Emission Control Coverage:** In California and any other state that adopts California emission warranty provisions, performance warranty and defect warranty coverage is applicable for 36 months/50,000 miles, and specific control devices are covered for 7 years/70,000 miles.

**Accessories:** Warranty coverage is for 12 months, regardless of mileage. If the part or accessory is installed during the New Vehicle Limited Warranty period, coverage is for 12 months or the remainder of the applicable warranty coverage, whichever is greater, with the exception of car covers, which are covered for 12 months only.

You may be eligible for transportation assistance if it's necessary that your vehicle be kept overnight for repairs covered under warranty. Please see your authorized Toyota dealership for further details.

For complete details about Toyota's warranties, please visit [www.toyota.com](http://www.toyota.com), refer to the applicable Owner's Warranty Information booklet or see your Toyota dealer.

In addition, there may be times when we will establish a special policy adjustment that will further defray repair costs. For details about the new vehicle limited warranty, see your Toyota dealer. And for complete details of Toyota's warranties, please refer to your Owner's Warranty.

[1] Brake Assist is designed to help the driver take full advantage of the benefits of ABS. It is not a substitute for safe driving practices. Braking effectiveness also depends on proper brake-system maintenance and tire and road conditions.

[2] The Toyota driver, front passenger, front seat-mounted side airbags and side curtain airbags are Supplemental Restraint Systems (SRS). The driver and front passenger airbags are designed to deploy in severe (usually frontal) collisions where the magnitude and duration of the forward deceleration of the vehicle exceed the design threshold level. The side airbags and side curtain airbags are designed to inflate in certain types of severe side-impact collisions. In all other accidents, the airbags will not inflate. To decrease the risk of injury from a deploying airbag, always wear seatbelts, sit upright in the middle of the seat as far back as possible from the airbag modules and do not lean against the door. Do not put objects in front of an airbag or around the seatback. Do not use rearward-facing child seats in any front passenger seat. The force of a deploying SRS airbag may cause serious injury or death. Please see your Owner's Manual for further instructions. Vehicle complies with "advanced airbag" requirements of FMVSS 208.

[3] Do not use rearward-facing child seats in any front passenger seat without switching off the passenger-side airbag. Please see your Owner's Manual for details.

[4] Toyota's Tire Pressure Monitor System alerts the driver when tire pressure is critically low. For optimal tire wear and performance, tire pressure should be checked regularly with a gauge; do not rely solely on the Monitor System. See your Owner's Manual for details.

[5] Performance tires are expected to experience greater tire wear than conventional tires. Tire life may be less than 24,000 miles, depending upon driving conditions.

[6] Payload is the GVWR minus curb weight and includes weight of occupants, optional equipment and cargo, limited by weight distribution. Payload is not the Vehicle Capacity Weight as defined by FMVSS 110, which will vary according to installed optional equipment.

[7] Before towing, confirm your vehicle and trailer are compatible, hooked up properly and you have any necessary additional equipment. Do not exceed any Weight Ratings and follow all instructions and cautions from your trailer hitch manufacturer and Toyota vehicle Owner's Manual. The maximum amount you can tow depends on the total weight of any cargo, occupants and optional equipment.

[8] Maximum towing capacity and tongue capacity requires V6 engine with available Towing Package. See Owner's Manual for details.

[9] 2006 preliminary mileage estimates determined by Toyota. EPA mileage estimates not available at time of posting. Actual mileage may vary.

'06 // TACOMA